

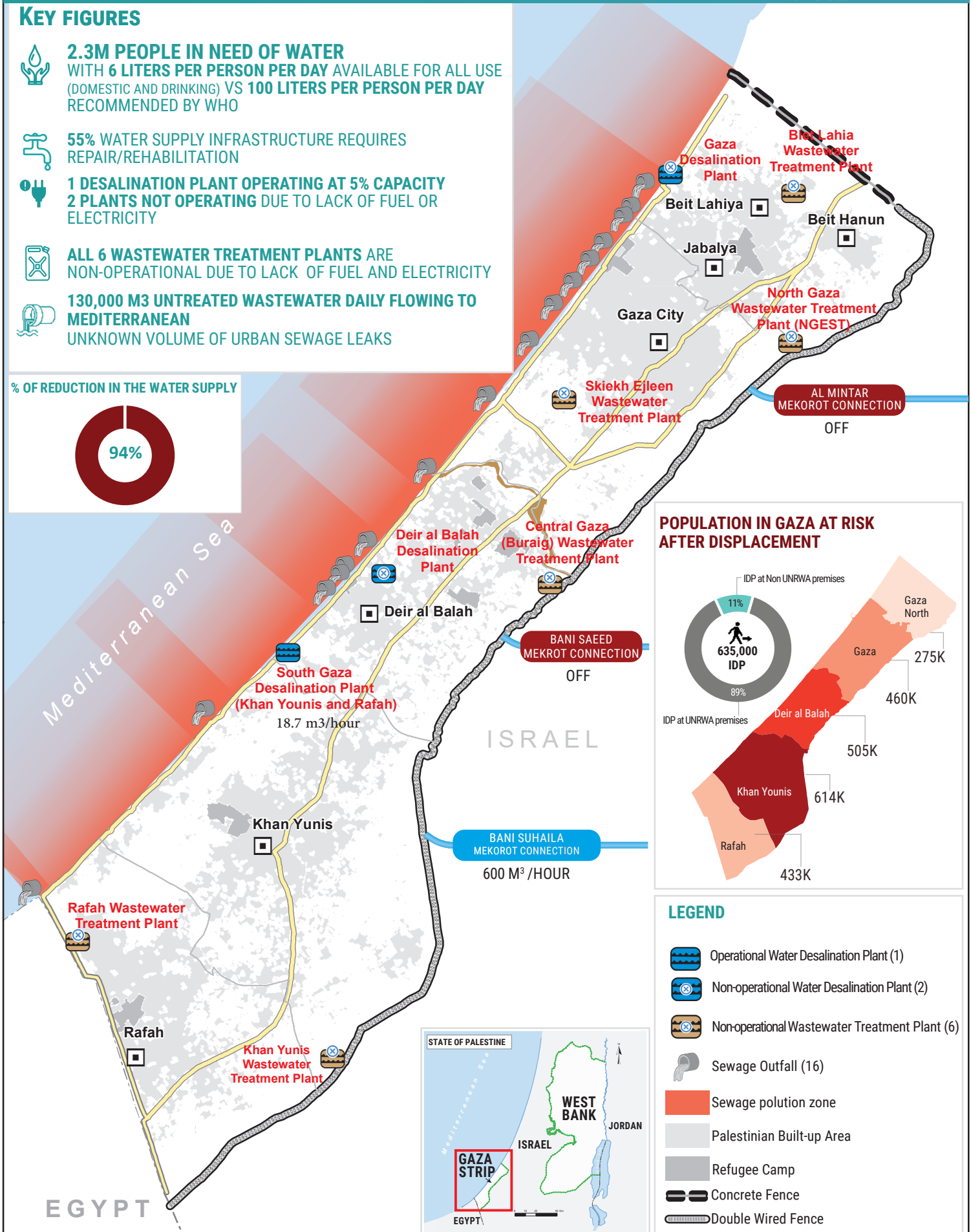
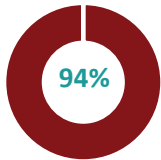
GAZA STRIP: CRITICAL WATER AND WASTEWATER INFRASTRUCTURE

22 October 2023

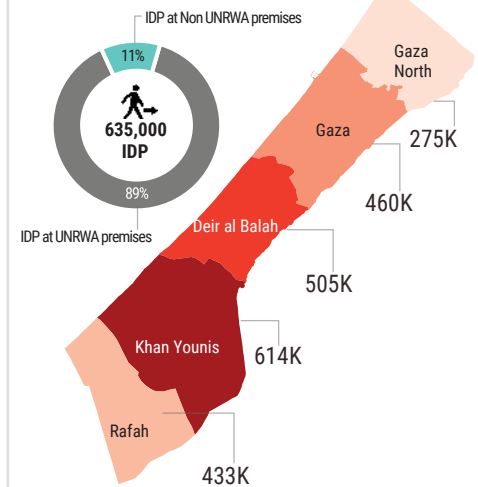
KEY FIGURES

- 2.3M PEOPLE IN NEED OF WATER**
WITH 6 LITERS PER PERSON PER DAY AVAILABLE FOR ALL USE (DOMESTIC AND DRINKING) VS 100 LITERS PER PERSON PER DAY RECOMMENDED BY WHO
- 55% WATER SUPPLY INFRASTRUCTURE REQUIRES REPAIR/REHABILITATION**
- 1 DESALINATION PLANT OPERATING AT 5% CAPACITY**
2 PLANTS NOT OPERATING DUE TO LACK OF FUEL OR ELECTRICITY
- ALL 6 WASTEWATER TREATMENT PLANTS ARE NON-OPERATIONAL DUE TO LACK OF FUEL AND ELECTRICITY**
- 130,000 M3 UNTREATED WASTEWATER DAILY FLOWING TO MEDITERRANEAN**
UNKNOWN VOLUME OF URBAN SEWAGE LEAKS

% OF REDUCTION IN THE WATER SUPPLY



POPULATION IN GAZA AT RISK AFTER DISPLACEMENT



LEGEND

- Operational Water Desalination Plant (1)
- Non-operational Water Desalination Plant (2)
- Non-operational Wastewater Treatment Plant (6)
- Sewage Outfall (16)
- Sewage pollution zone
- Palestinian Built-up Area
- Refugee Camp
- Concrete Fence
- Double Wired Fence

DISCLAIMER

THE DESIGNATIONS EMPLOYED AND THE PRESENTATION OF THE MATERIAL ON THIS MAP DO NOT IMPLY THE EXPRESSION OF ANY OPINION WHATSOEVER ON THE PART OF THE SECRETARIAT OF THE UNITED NATIONS CONCERNING THE LEGAL STATUS OF ANY COUNTRY, TERRITORY, CITY OR AREA OR OF ITS AUTHORITIES, OR CONCERNING THE DELIMITATION OF ITS FRONTIERS OR BOUNDARIES.

SOURCE OF DATA: WASH CLUSTER STATE OF PALESTINE - UNICEF IS THE GLOBAL CLUSTER LEAD AGENCY (CLA) FOR WASH CLUSTER. MAP SOURCE: OCHA OPT.